

ORDINANCE NO. 2012-03

AN ORDINANCE OF COUNCIL OF THE BOROUGH OF SOUTH GREENSBURG WESTMORELAND COUNTY, PENNSYLVANIA, AMENDING THE ZONING ORDINANCE OF THE BOROUGH OF SOUTH GREENSBURG, DATED THE 13TH DAY OF DECEMBER, 1993, TO CHANGE THE DESIGNATION OF THAT CERTAIN PROPERTY SITUATE IN THE BOROUGH OF SOUTH GREENSBURG AT 20 HUFF AVENUE, AS MORE FULLY DESCRIBED BELOW FROM A R-1 ONE-FAMILY RESIDENCE DISTRICT TO A C-2 GENERAL COMMERCIAL DISTRICT.

The Borough of South Greensburg hereby ordains as follows:

The Zoning District Map as provided for and described in Section 163-1 of the South Greensburg Zoning Ordinance enacted December 13, 1993, is hereby amended to provide for a change in designation of that certain property situate in the Borough of South Greensburg more specifically described as 20 Huff Avenue from an R-1 One-Family Residence District to a C-2 General Commercial District. Further, Douglas P. Regola, Borough Engineer, is hereby authorized to designate said area as "C-2" General Commercial District on the Zoning District Map as prepared by Victor P. Regola and Associates, Inc. dated May, 1993.

All other provisions of the said Zoning Ordinance are to remain effective and in force.

All Ordinances or parts of Ordinances, inconsistent herewith, be and the same are hereby repealed.

ORDAINED AND ENACTED into an Ordinance of the Borough of South Greensburg this 9th day of April, 2012, by Council for the Borough of South Greensburg.

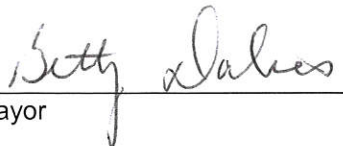
ATTEST:

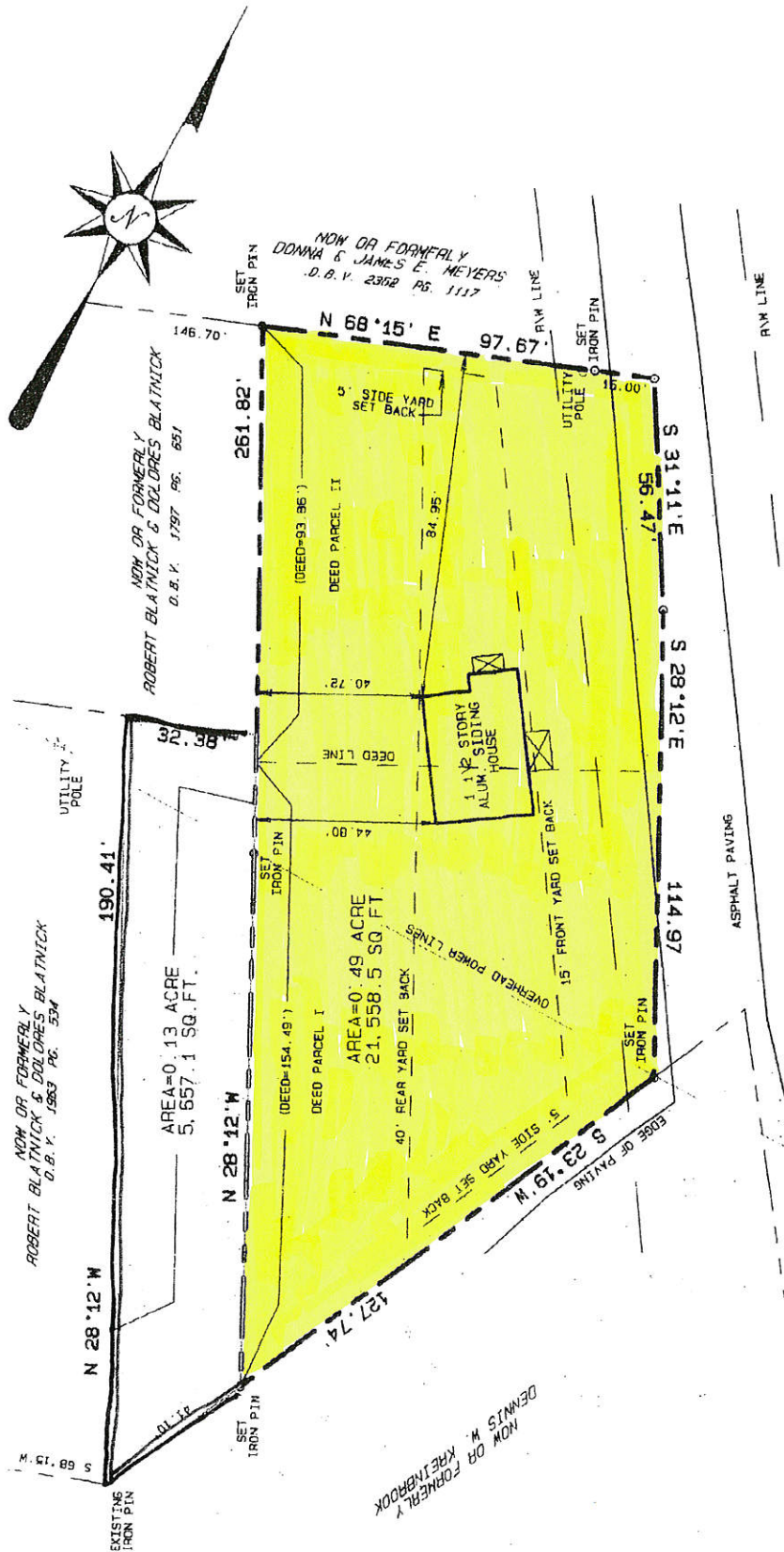

Secretary

BOROUGH OF SOUTH GREENSBURG

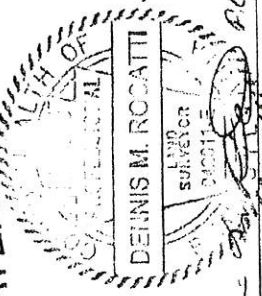

President of Council

Examined and approved this 9th day of April, 2012.


Mayor



HUFF AVENUE EXTENTION - 50' RIW



PLAN OF SURVEY FOR
DENNIS W. KREINBROOK
 SITUATED IN
 SOUTH GREENSBURG BOROUGH, WESTMORELAND COUNTY
 PENNSYLVANIA
 Scale: 1" = 40' Date: Sept. 26, 2011
 PREPARED BY: DENNIS M. ROSATTI
 REVISED: OCT. 15, 2011
Dennis M. Rosatti Associates
 313 Thomas School Road
 Greensburg, Penna. Phone: (724) 832-7737

